

# SYNCHROWEB TECHNOLOGY



## Corporate Profile

Synchroweb Technology (M) Sdn. Bhd. specializes in the Wi-Fi solutions industry. Our expertise is in the distribution, support, training and analytical software as a service.



## Why Synchronweb?

We have up to 21 Years of industry experience

CELEBRATING  
**21**  
YEARS

# WELCOME TO OUR COMPANY

Synchronweb Technology (M) Sdn. Bhd. is a technology leader focused on improving the ways businesses collect information. Synchronweb Technology was first established in the year 1999 and officially incorporated in year 2001. What started off a goal to be an open source alternative, eventually grew into a leading professional company that provide network research and development, services deployment and captive portal / radius solutions technology. Our innovations in the Wi-Fi industry combined with our distributed products from potential brands have made us a formidable force in delivering cost-effective solutions.



## OUR SOFTWARE

**KIWIRE**® **OMAYA**®

## PRODUCT DISTRIBUTION

**MikroTik**

**mimosa**  
by Airspan

**UBIQUITI**  
NETWORKS

**DIVIO**<sup>Tec</sup>

**Flash&Start**<sup>®</sup>  
INTERNET PROTECTION

**EDIMAX**  
NETWORKING PEOPLE TOGETHER



### Distributor & Reseller

As Official Distributor, we ensure that our customers not only receive the best quality and prices, but also the highly demanded technical support they need.



### Development

Our in-house developed software (Kiwire and Omayya) designed primarily for Wi-Fi data analytics and reporting have helped businesses engage and connect with millions of users.



### Solutions Provider

We provide unique Wi-Fi solutions from social media data collection, marketing campaign to advanced features such as customer behavior and facial recognition.



### Training Programme

Participation is always welcome in our free training sessions such as knowledge building, product workshop and live testing demonstration lead by our certified trainers.

### Mission Statement:

“In Synchronweb We Trust” - Represents our purpose and commitment to our client for us to strive excellent solutions, services and product.





Hospitality

Leisure /  
Shopping  
Complex



F&B /  
Cafe & Bar

Corporate,  
Housing &  
Smart City



Education /  
Large Rooms,  
Auditorium

Transportation /  
Public Terminals



## COMPANY INDUSTRIES

**Synchroweb Technology** is based in Malaysia, however our wireless network expertise extends internationally through our **partners from neighboring countries such as Singapore, Thailand, Indonesia, Vietnam** to clientele across the globe from **Spain, South Korea, Ecuador, Brunei, Pakistan, India, China, Cambodia and more.**

We serve a multitude of industries. Wi-Fi presence is a vital component for hospitality, leisure and entertainment centres, food and beverage outlets, corporate organizations, educational facilities, public events and transportation hubs. Our professional approach ensures the full potential of Wi-Fi technology can be achieved.



## OUR SERVICES

### Kiwire

**A single platform that enables customer data gathering and analytics by offering Wi-Fi / network access.**

Enables you to manage and customize your splash portal, analyze login behavior, social network targeting, ad campaigns and more.

### Synchroweb Academy

**Develop knowledge skills as we share new technologies and recommend solutions for the Wi-Fi industry.**

Join us for a free session and learn more about what the Wi-Fi industry has to offer to benefit organizations around the globe.

### Omaya

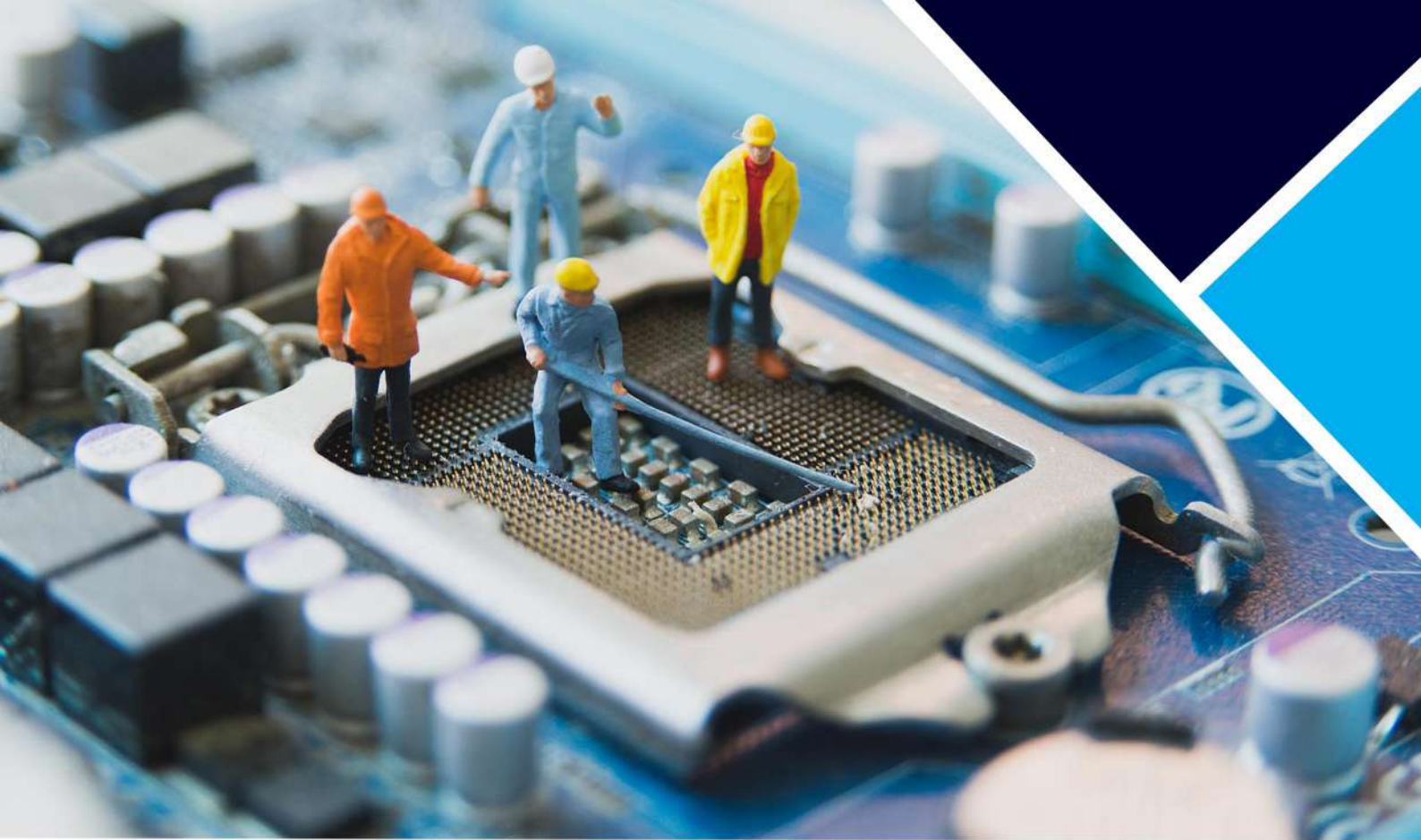
**New and emerging platform to analyze visitor and crowd traffic patterns using Wi-Fi technology.**

Obtain in-depth insights on crowd analytics from location based reporting, cross referencing daily heat maps and facial recognition of return customers.

### Product Support & Warranty

**We ensure that our customers get the proper attention they need to get their products up and running.**

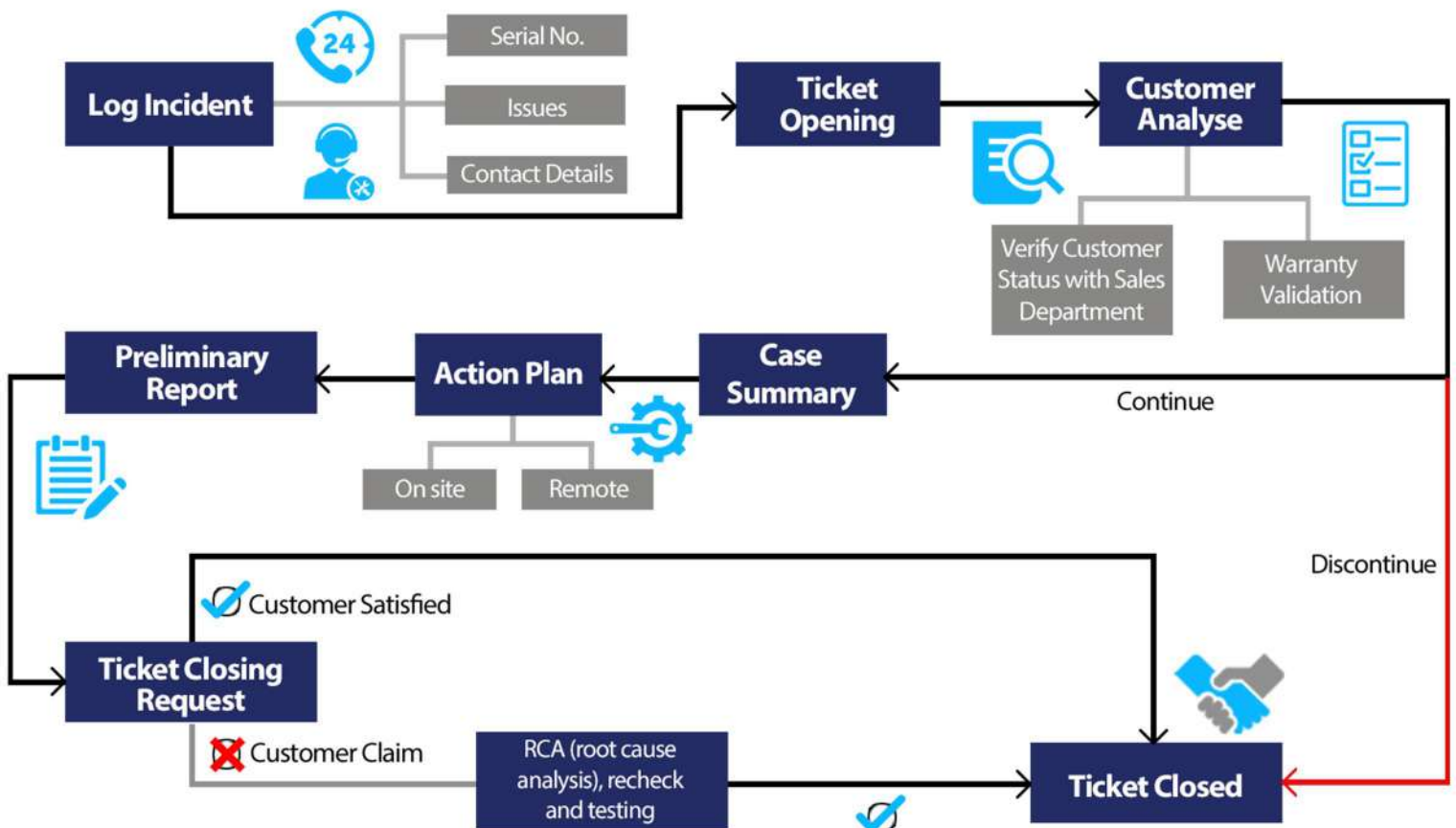
Wi-Fi products often involve high valued investments especially when it comes to large scaled projects. Get the assurance you need via Synchroweb Technology.



# TECHNICAL SUPPORT CALL FLOW PROCESS

Technical support available 24x7x365

Highly structured system for the processing of tickets/calls



Web interface for the follow-up of tickets directly with customers

# SYNCHROWEB TECHNOLOGY



+(60)3 5880 5486



[sales@synchroweb.com](mailto:sales@synchroweb.com)



C-1-5 Setiawalk, Persiaran Wawasan,  
Pusat Bandar Puchong,  
47160 Puchong, Selangor.